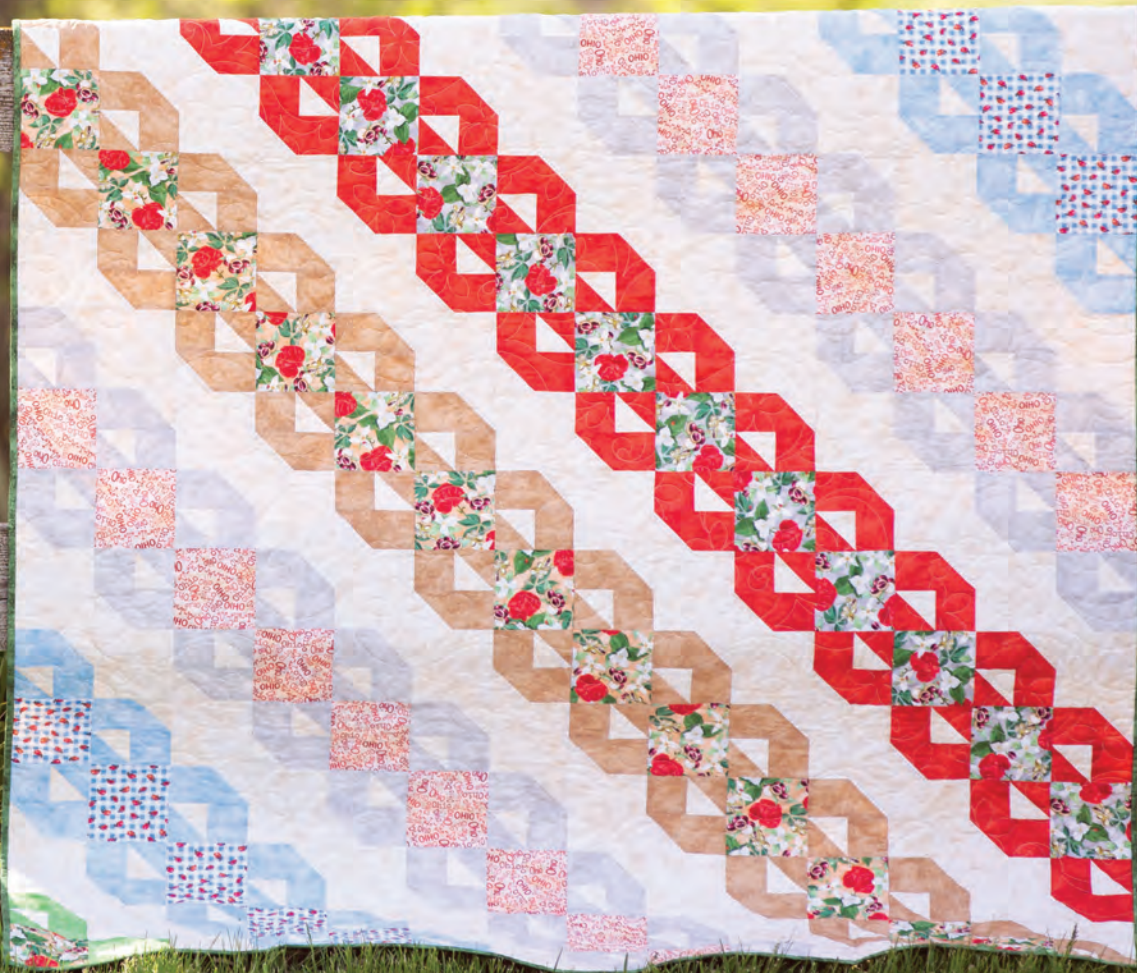


THE GREAT  
SEWING  
*adventure*  
ACROSS OHIO

# *Cascading Ribbons*

56" x 64"

Designed By  
Joanne Hubbard





## **MATERIALS:**

1/3 yard Grey Flowers  
1/3 yard Tan Flowers  
1/3 yard Ladybug  
1/3 yards Red Words  
2 yards Cream Blender  
7/8 yard Grey Blender  
5/8 yard Tan Blender  
5/8 yard Blue Blender  
5/8 yard Red Blender  
¼ yard Green Blender Fabric  
2/3 yard Forest Blender for binding  
3-3/4 yards Tan Blender for backing

***READ THROUGH ALL INSTRUCTIONS BEFORE BEGINNING. SEW PIECES RIGHT SIDES TOGETHER AND USE A 1/4 SEAM ALLOWANCE THROUGHOUT UNLESS OTHERWISE STATED. WOF = WIDTH OF FABRIC. RST = RIGHT SIDES TOGETHER; HST = HALF SQUARE TRIANGLE***

## **CUTTING:**

### **From Grey Flowers Fabric:**

Cut [2] — 4-1/2" × WOF strips  
Subcut [14] — 4-1/2" squares

### **From Tan Flowers Fabric:**

Cut [2] — 4-1/2" × WOF strips  
Subcut [14] — 4-1/2" squares

### **From Ladybug Fabric:**

Cut [2] — 4-1/2" × WOF strips  
Subcut [10] — 4-1/2" squares

### **From Red Words Fabric:**

Cut [2] — 4-1/2" × WOF strips  
Subcut [18] — 4-1/2" squares

### **From Blender, Cream Fabric:**

Cut [7] — 4-1/2" × WOF strips  
Subcut [56] — 4-1/2" squares  
Cut [5] — 3" × WOF strips  
Subcut [56] — 3" squares  
Cut [7] — 2-1/2" × WOF strips  
Subcut [112] — 2-1/2" squares

### **From Blender, Grey Fabric:**

Cut [3] — 4-1/2" × WOF strip  
Subcut [36] — 2-1/2" × 4-1/2" rectangles  
Cut [2] — 3" × WOF strips  
Subcut [18] — 3" squares  
Cut [3] — 2-1/2" × WOF strips  
Subcut [36] — 2-1/2" squares

### **From Blender, Tan Fabric:**

Cut [2] — 4-1/2" × WOF strips  
Subcut [26] — 2-1/2" × 4-1/2" rectangles  
Cut [1] — 3" × WOF strip  
Subcut [13] — 3" squares  
Cut [2] — 2-1/2" × WOF strips  
Subcut [26] — 2-1/2" squares

### **From Blender, Blue Fabric:**

Cut [2] — 4-1/2" × WOF strips  
Subcut [20] — 2-1/2" × 4-1/2" rectangles  
Cut [1] — 3" × WOF strip  
Subcut [10] — 3" squares  
Cut [2] — 2-1/2" × WOF strips  
Subcut [20] — 2-1/2" squares

### **From Blender, Red Fabric:**

Cut [2] — 4-1/2" × WOF strips  
Subcut [26] — 2-1/2" × 4-1/2" rectangles  
Cut [1] — 3" × WOF strip  
Subcut [13] — 3" squares  
Cut [2] — 2-1/2" × WOF strips  
Subcut [26] — 2-1/2" squares

### **From Blender, Green Fabric:**

Cut [1] — 4-1/2" × WOF strip  
Subcut [4] — 2-1/2" × 4-1/2" rectangles  
Subcut [2] — 3" squares  
Subcut [4] — 2-1/2" squares

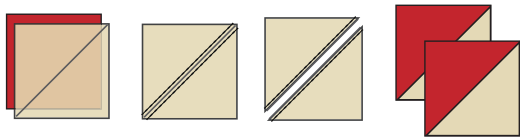
### **From Blender, Forest Fabric:**

Cut [7] — 2-1/2" × WOF strip for binding

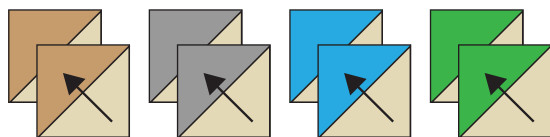
## BLOCK ASSEMBLY:

### Half Square Triangles (HST)

1. On the wrong side of all [56] Cream Blender 3" squares, draw a diagonal line, corner to corner.
2. With right sides together, align [1] marked Cream Blender 3" square with [1] Red Blender 3" square.
3. Sew 1/4" on each side of the drawn line. Cut on the drawn line to make [2] HST. Press toward the Red Blender Fabric. Trim these HST units to 2-1/2" square. Make [26] Red/Cream HST.



4. Following the same procedure, make [26] Tan/Cream HST, [36] Grey/Cream HST, [20] Blue/Cream HST, and [4] Green/Cream HST.



### Snowball Cornered Rectangles

1. On the wrong side of all [112] Cream Blender 2-1/2" squares, draw a diagonal line, corner to corner.
2. With RST, align [1] marked Cream Blender 2-1/2" square with [1] Red Blender 2-1/2" x 4-1/2" rectangle, as shown. Be aware of the orientation of the marked line.



3. Sew on the marked line. Trim 1/4" away from the sewn line. Press toward the Cream Blender Fabric. Make [26] Red/Cream Snowball Cornered Rectangles.

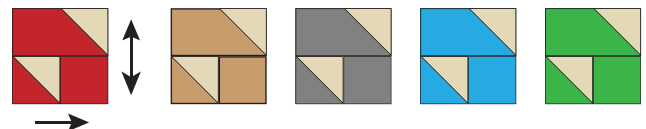


4. Following the same procedure, make [26] Tan/Cream Snowball Cornered Rectangles, [36] Grey/Cream Snowball Cornered Rectangles, [20] Blue/Cream Snowball Cornered Rectangles, and [4] Green/Cream Snowball Cornered Rectangles.



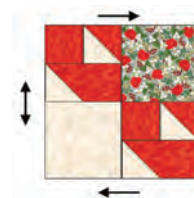
### Quarter Block Construction

1. Using [1] Red Blender 2-1/2" square, [1] Red/Cream HST, and [1] Red/Cream Snowball Cornered Rectangles, lay out and sew the quarter block as shown. Press the bottom row to the Red 2-1/2" square. Press the center seam open. (See arrows) Make [26] Red Quarter Blocks.
2. Repeat Step 1, make [26] Tan Quarter Blocks, [36] Grey Quarter Blocks, [20] Blue Quarter Blocks, and [4] Green Quarter Blocks.

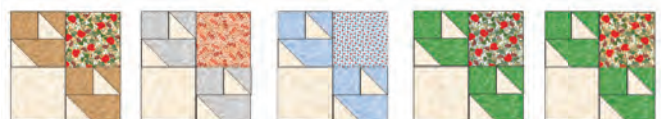


### Full Block Construction

1. Using [2] Red Quarter Block units, [1] Cream Blender 4-1/2" square, and [1] Grey Flower 4-1/2" square, lay out the block as shown. Sew the horizontal units first and press seams to the unpieced 4-1/2" square. Sew the [2] rows together and press this seam open. (See arrows) Make [13] Red/Cream/Grey Flower Blocks.



2. Repeat Step 1, making [13] Tan/Cream/Tan Flower Blocks, [18] Grey/Cream/Red Words Blocks, [10] Blue/Cream/Ladybug Blocks, [1] Green/Cream/Grey Flower Block, and [1] Green/Cream/Tan Flower Block.

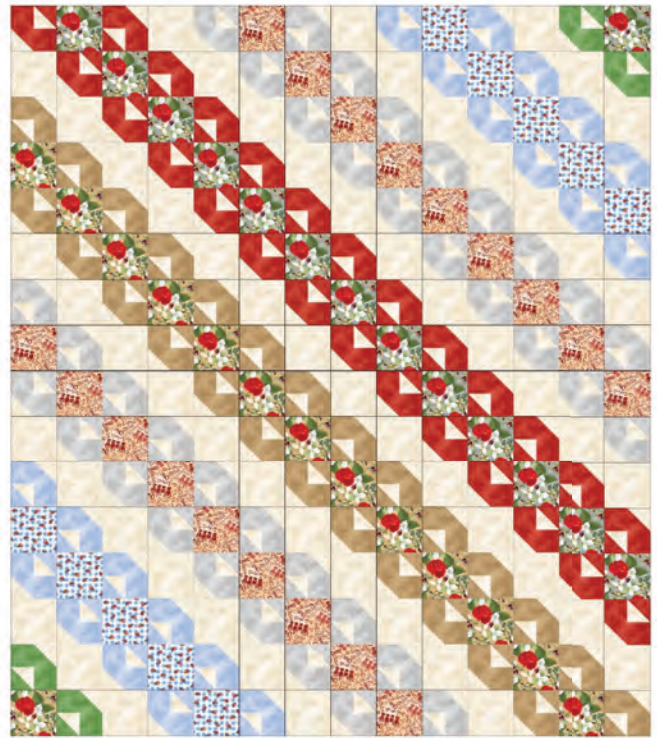


## QUILT TOP ASSEMBLY:

1. Lay out and sew the blocks following the diagram. Press all seams open.

## FINISHING:

1. Layer quilt top, batting, and backing together and quilt as desired.
2. Sew [7]— 2-1/2" binding strips together end to end to make continuous double fold binding. Bind as desired.
3. Label and Enjoy!



### *Joanne Hubbard*

Joanne lives in Milan, Ohio – the birthplace of one of her heroes, Thomas Edison. Without his lightbulb invention, she would not be able to spend countless hours sewing into the wee hours of the morning. Quilting is her passion, and she has the full support and encouragement of her family, especially her “quilt holder extraordinaire” husband, Jack. Joanne enjoys every aspect of quilting from designing, choosing fabrics, all the way to the binding - even “quilt math.” She teaches classes, offers trunk shows and workshops, creates patterns, and tests patterns for a variety of designers.

Joanne blogs at <http://joanne-everyonedeservesaquilt.blogspot.com/>